

Sept 28, 73

(5)

E Combo Pl

37+00

Fence Rail

Corner House (Hood)

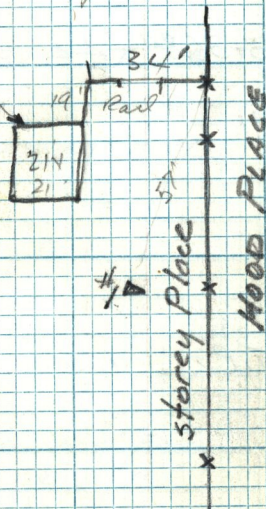
#2

NE corner Barn on Storey House

37+81

NW Corner Storey House

Dog Pen 21' x 21'



FANK (U.S.B.R)

#1 to Corner of Hood House

Cellar + 15' 1/2 to #2

#1

Fence

apple tree

E 40+07.34

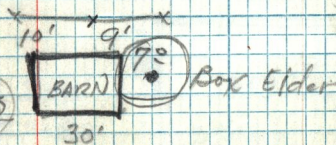
Corner Fence E end TP

Toe Staps

Rise 8.5' in 25' North Spring above = 34%

Box Elder

Barn



#2 - #3 157' ^{94'} fence (63)

END fence TP

41+08.84 P.O.T.

OAK clump add 13'

9.9 slope in 50' N-S

Hand level 52 NW Corner Storey Ho. 4859.5

15' E. of Post.

N. Line fence 19'